

Neptune Kitchen Fitting Guide



Welcome

Welcome to your Neptune Kitchen Fitting Guide.

Please read through this fitting guide thoroughly prior to fitting. This guide is designed to help you fit your Neptune Kitchen easily and accurately.

For your own safety do not attempt to lift heavy items by yourself.

Tools needed

• Belt sander • Long Spirit levels • Tape measure • Mitre saw • General hand tools

Contents

Section	Page	Section	Page
1 Overview of Cabinets/Features	2	7 Worksurface & Upstand Fitting	9
2 Levelling & Marking	5	8 Care & Maintenance	10
3 End panel fitting	7	9 Contact Information	10
4 Fitting the cornice	7		
5 Handle fitting	8		
6 Re-painting	8		

1. Overview of Cabinets/Features

This section will explain the cabinets and their features.

a. Base Cabinets

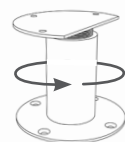
Cabinet 'ears'

At the back of each cabinet there are 30mm "ears" that project out to the rear. This allows for a robust construction process. These "ears" are removable where you have services that require extra space.

40mm Void

Base cabinet standard depth 500mm. Cabinets are designed to be set at 600mm from the wall to give you a 40mm void for services.

Base cabinet standard height 890mm



Adjustable feet

Rear metal feet are easily adjusted from inside the cabinet using the allen key provided to allow for easy levelling.

Front Feet

All cabinets are fully framed from worksurface to floor. This is part of our bespoke look.

b. Wall Cabinets

Wall Fixing

At the top of each cabinet is a 32mm rim which allows each cabinet to attach to the wall by fitting through the back rim with two adequate wall fixings.

Wall cabinet standard depth 338mm

End panels

The side cheeks allow for end panels to be fitted. These end panels fit into the cheeks behind the front face and are secured to the cabinets using a grab adhesive.

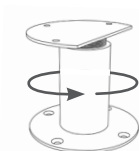
Wall cabinet standard height 800mm

Wall battens need to be cut flush at the end of a run in order to fit the end panel. Battens are supplied separately to your wall cabinets.

c. Full Height Cabinets

Cabinet 'ears'

At the back of each cabinet there are 30mm "ears" that project out to the rear. This allows for a robust construction process. These "ears" are removable where you have services that require extra space.



125mm Void

Full height cabinets standard depth is 650mm including 50mm void

Base cabinet standard height 2170mm

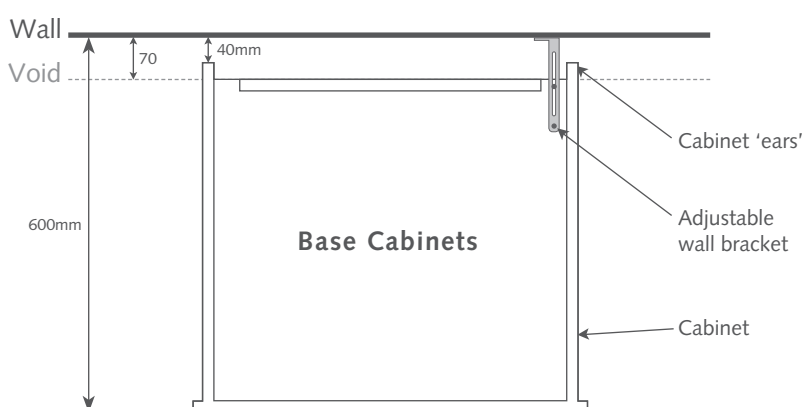
Adjustable feet

Rear metal feet are easily adjusted from inside the cabinet using the allen key provided to allow for easy levelling.

Front Feet

All cabinets are fully framed from worksurface to floor. This is part of our bespoke look.

d. Plan View of Cabinets



Standard depth :

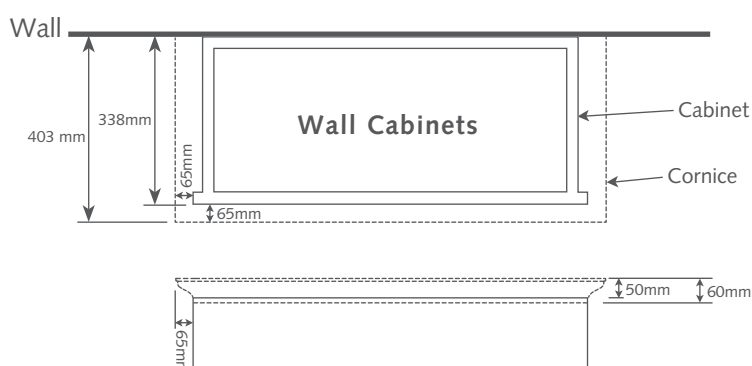
We suggest base cabinets are set at 600mm from the wall as standard.
We suggest full Height cabinets are set from 600mm to 725mm from the wall.

Standard height :

We suggest base cabinets are set 890mm high.
We suggest full height cabinets are set at 2220mm tall including cornice.

Void :

The maximum void (70mm) can be achieved by cutting back the cabinet 'ears'.



Standard depth :

We suggest all cabinets are set at 338mm from the wall as standard.

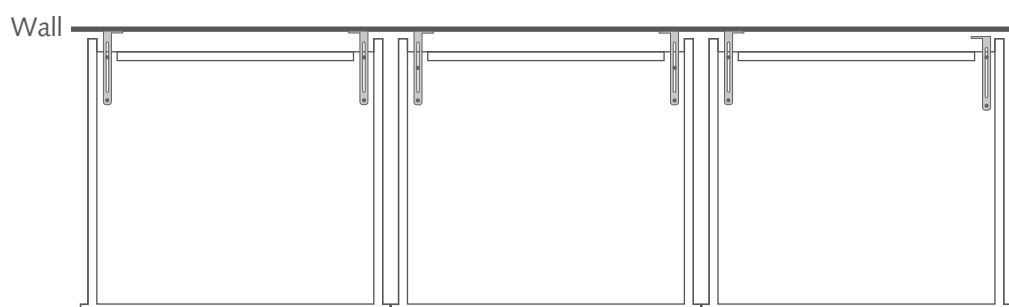
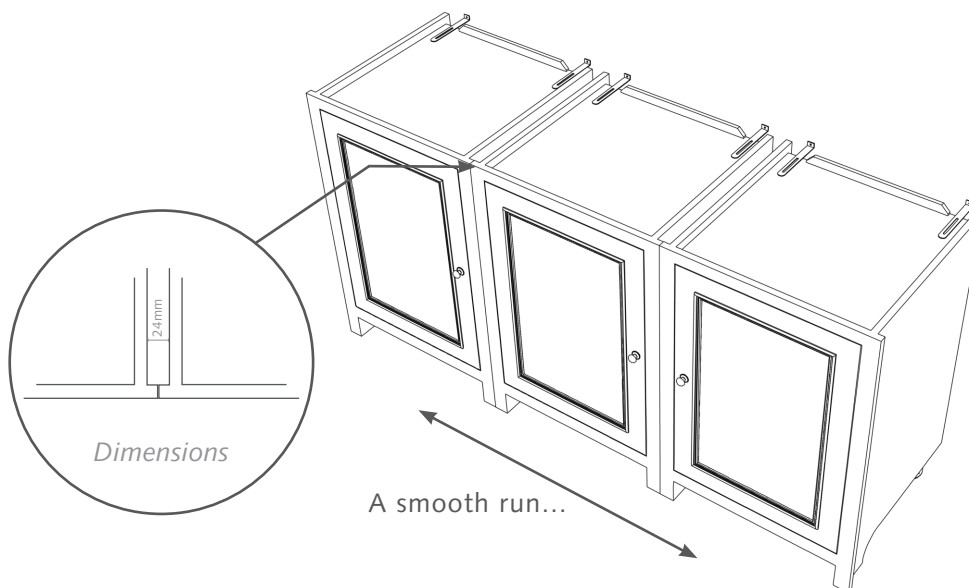
Standard height :

We suggest wall cabinets are set 450mm above a work surface as standard giving a total height of 2220mm including cornice from the floor.

f. Cabinet Joining - Flush

Normally you can set flush for a cleaner more modern look. Choose from one of our more modern monochrome paints to emphasise this look... you can even bring the kicker plate forward to emphasise the flush look and fit with our smallest chrome knobs.

A 2mm bevel on the edge of each cabinet gives a neat v-groove finish between cabinets. Where your cabinets meet a wall the frame can be scribed to exactly fit any variations in the wall shape. For larger variations a filler strip should be used.

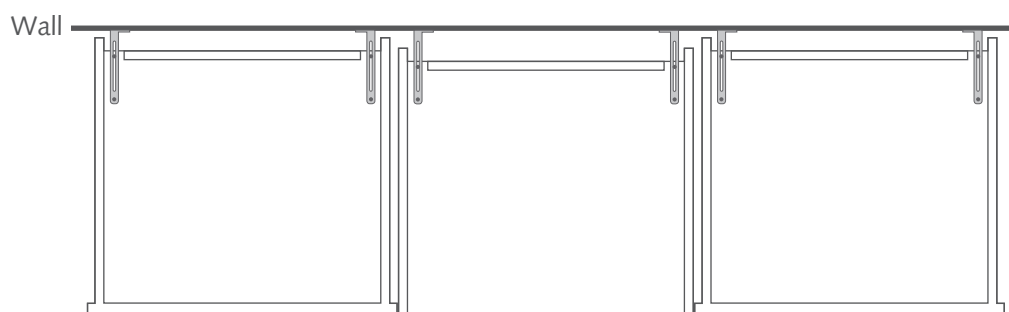
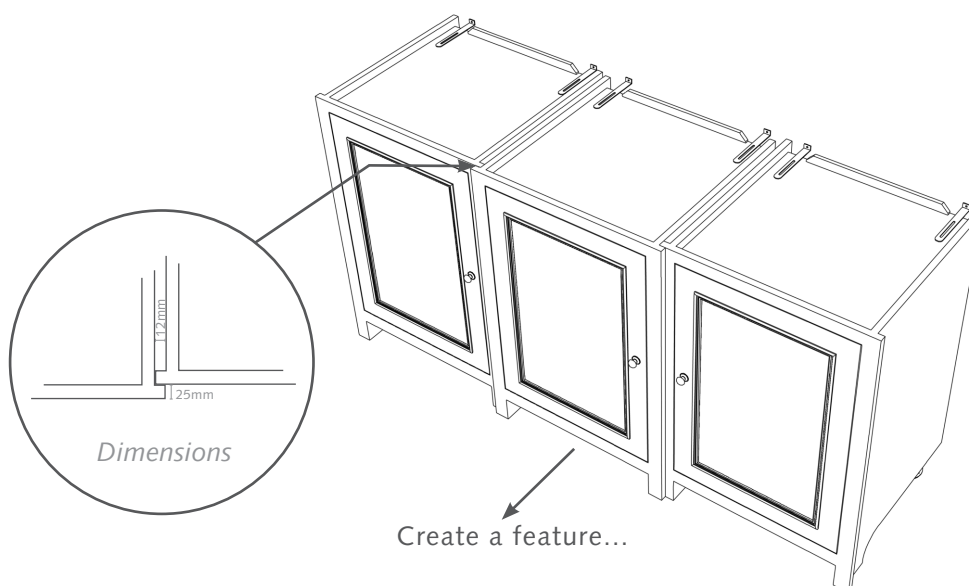


e. Cabinet Joining - Offset

A key feature of the Neptune kitchen is the ability to form an overlap. When designing a kitchen we use this to emphasise a feature, such as a sink.

This also provides additional functionality, so if you require a larger void for a main drain or if there is not quite enough space in the cabinet run for the items you have chosen, each overlap that you incorporate will provide an additional 12mm of space.

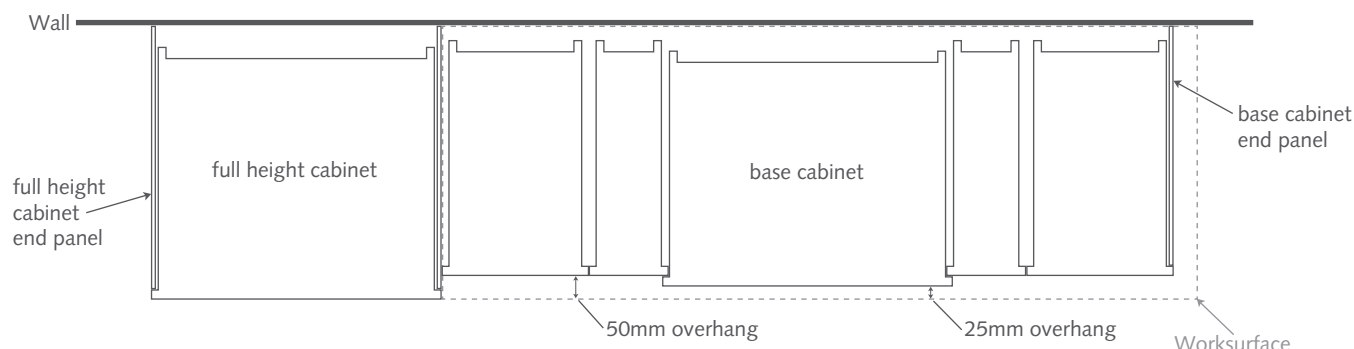
N.B Offset cannot be achieved with the dishwasher panel.



g. Plan View of Joining Cabinets

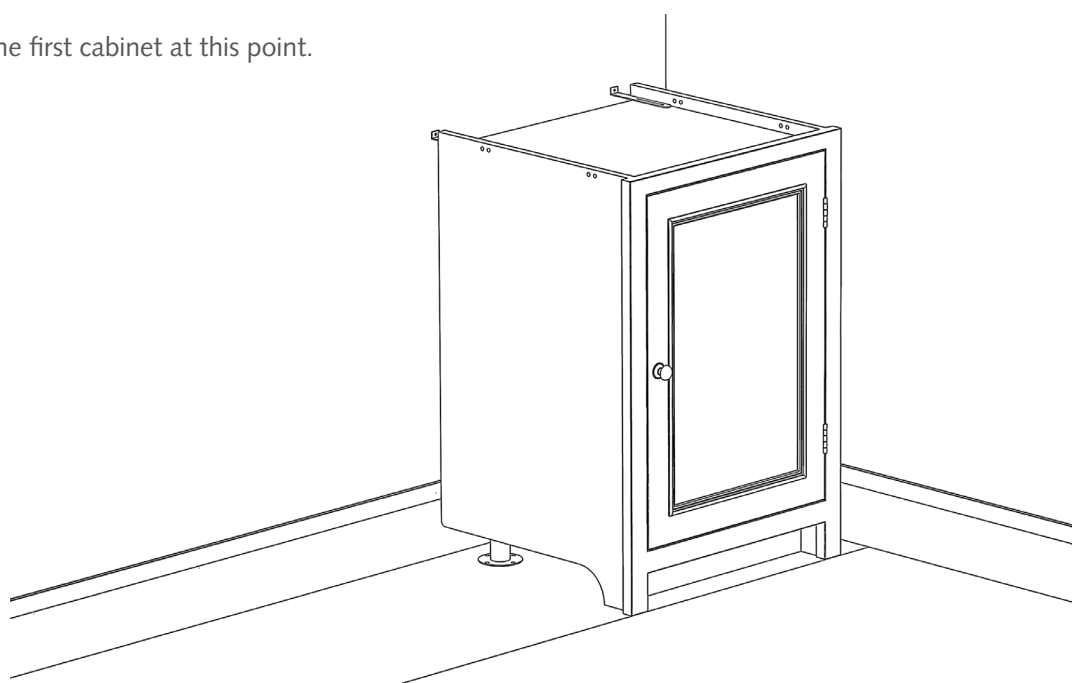
With your base cabinets set at the standard depth of 650mm your worksurface will overhang by 50mm. This allows you to overlap your cabinets forward and still have an overhang of 25mm. Please see diagram below.

Joining Cabinets - Explained



2. Levelling & Marking

1. The most important area to check is that you have adequate space. It is important to remember that every one of our pieces is hand made, so measurements may vary by a small amount. Please do not attempt to fit to the millimetre!
2. Mark a line on the floor to which the front of the cabinets are to be fitted (we suggest 600mm from the wall at worktop height. See diagram below. Please note that this measurement must be calculated at worktop height so that the worktops overlap correctly. At floor level you may have skirting or a sagging plaster wall which will set the cabinets at the wrong distance from the wall).
3. Find the **lowest point** along the 600mm fitting line you created in Section 2 above.
4. Fit the first cabinet at this point.



5. IT IS VITAL THAT YOU NOW LEVEL EACH CABINET THOROUGHLY.

This is done as follows:

Place the cabinet as near to its final location in the kitchen as possible, whilst still giving yourself enough room to access the rear adjustable feet.

Turn the adjustable feet until each side of the cabinet is level when checked with a spirit level as in Diagram 1.

Then move the spirit level to the position shown in Diagram 2. Continue to make small adjustments to the feet until the unit is level in this direction.

Finally check all the leveling of the cabinet by placing the spirit level across the unit and vertically on the side. Shown in Diagram 3. You may find that you have to go back and forth between the two legs several times.

If the cabinet is not in its final location, trying not to disturb the adjustable feet. After making any minor adjustments fix to the wall using the two rear adjustable brackets.

TIME SPENT IN LEVELLING IS NEVER WASTED AND WILL RESULT IN A BEAUTIFUL FIT!

Diagram 1

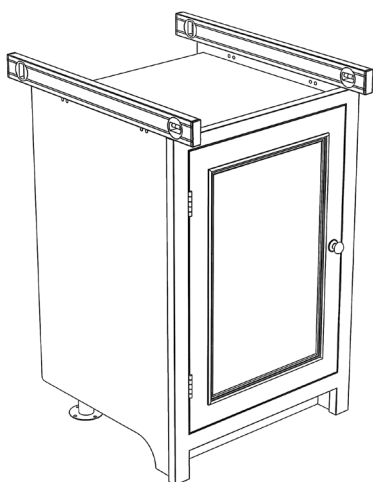


Diagram 2

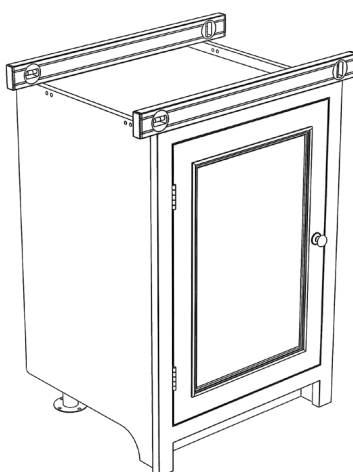
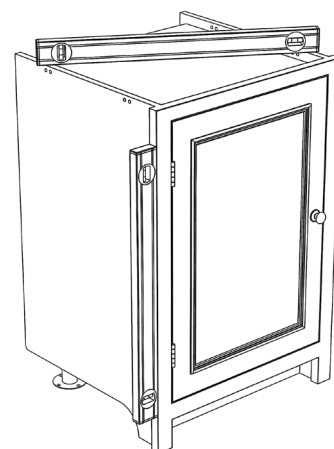


Diagram 3



Special case leveling

In some cases the floor level change is too much for the adjustable feet to compensate for. In such cases it may be necessary to use a belt sander to shorten the front feet of the cabinet. This will mean that the feet can accurately follow the contours of the floor and remain flush at worktop height.

The integrated kickboard may also need to be sanded if the adjustment to the feet is significant.

This highlights the importance of beginning the kitchen installation at the lowest point in the room.

You will find that when the first piece is thoroughly leveled the result is an immaculate fit.

6. Levelling & fitting the second Cabinet

Level the second cabinet following the same process as before.

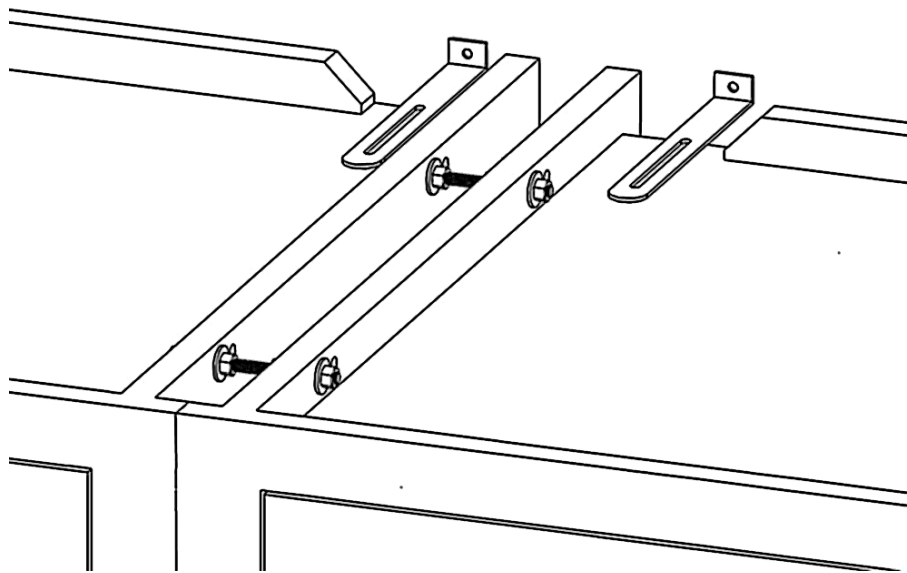
Before fixing the second cabinet to the wall attach it to the first cabinet. To do this you will need the threaded bolt system.

This fixing system is used to attach the cabinets together, allowing the vertical gap between the cabinets to be accurately maintained.

The threaded bar and 4 nuts and washers need to be threaded through the holes on the cabinet carcass and tightened. Be careful not to damage the carcass by over tightening the fixings.

When the cabinets are secured together, check that they are maintaining the 600mm depth from the wall, and secure the second carcass to the wall.

TIME SPENT IN LEVELLING IS NEVER WASTED AND WILL RESULT IN A BEAUTIFUL FIT!



IMPORTANT NOTE:

The only element of fitting a Neptune kitchen that requires careful work is the levelling process. Once the chosen worksurface is fitted, cupboard doors may move over time if cabinets are not levelled correctly during the initial installation process.

3. End Panel Fitting

End panels should be scribed and glued in position. We suggest the use of a strong grab adhesive to fix them in place.

4. Fitting the cornice

The final stage of fitting is to add the cornice. This needs to be cut accurately using a mitre saw.

5. Handles Fitting

Each chrome knob comes with two bolts. The long bolt is designed for fitting to drawers and the short bolt is designed for fitting to doors.

The oak knobs similarly come with a long and short screw which secure into the back of the oak knob. The cup handle comes with a central bolt that guarantees that your cup handle is correctly positioned. Once secured into place there are four finishing screws to give the cup handle its authentic look.



Small Chrome



Medium Chrome



Large Chrome



Chrome Cup Handle



Small Oak



Large Oak

6. Re-Painting

Please note that it is necessary to remove the cabinet doors and all hardware before you begin painting.

In order to get a perfect finish to your kitchen, we recommend a final topcoat to the outside of your kitchen. This is easily achieved and should take 1 to 2 days depending on the size of your kitchen or your choice of paint colour.

Even if you choose to retain our wonderful Limestone finish it is likely that you will need a final topcoat. This may be because during final fitting some bespoke panels are included or during the fitting process detailed scribing is required. It is also possible that the production of your cabinets has come from separate batches and therefore the final finish may be from different colour batches. These minor variations are unnoticeable on freestanding items, but may not be perfect on your fitted kitchen.

You therefore should allow for a final topcoat, which is easy to achieve. All that is needed is a light rubdown on the outsides of the cabinets only followed by a light topcoat to achieve the desired result. The interior calico finish will suit whatever colour you choose.

7. Worksurface & Upstand Fitting

This section will explain how to fit the worksurfaces and upstands.

For your own safety do not attempt to lift heavy items by yourself!

Worksurfaces

Please note that it is not recommended that your Oak worksurfaces be used in a run up to a cooker or sink. Extremes in temperature or moisture can cause damage to your Oak worksurface. We also supply stone tops which we recommend for these kinds of conditions.

a. Oak

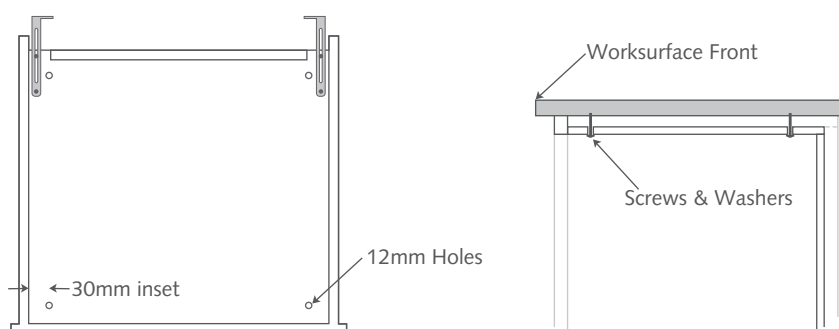
We have also supplied you Oak tops with transit bars to prevent warping. These will need to be removed before fitting and securing your worktop as detailed below.

When your oak tops have been cut and scribed as required please use the 50mm stainless steel screws and washers provided to fix them in place.

We suggest the worktop is fixed down at regular intervals using screws along the front and back edges.

To allow natural movement within the oak a 12mm hole should be drilled for each screw in the top panel of the cabinet. The hole should be positioned 30mm away from the side panel (not in the centre of the top panel) to prevent warping and damage to your cabinet.

Position the screw in the centre of the 12mm hole and screw up into the worktop from the inside of the cabinet. (see drawing below)



Your oak worktops have been finished using our oak seal product. For maintenance we suggest a re-application from time to time depending on usage.

b. Granite & Marble Worksurfaces

These are supplied plus or minus 2mm. We strongly advise that you provide measurements for your granite or marble worktops after the kitchen has been fitted.

Granite or marble worktops should be secured using grip fill or a similar adhesive and should be joined using stone bonding components which are available from www.stonetools.co.uk, tel: 020 8309 5533

8. Care & Maintenance

Painted Cabinets

Your Neptune painted furniture is manufactured from a combination of bass wood and birch faced plywood. This gives the cabinets great strength and stability. Over time the cabinets moisture content will adjust to suit the ambient humidity of the room they are placed in. This means that the cabinet may move with some minor hairline cracking as it stabilises in this environment. This will not affect the structure of your furniture in any way.

The cabinets are hand painted with 3 coats of Neptune water based eggshell paint. The hand painting process is used to give the natural feel of the brushstrokes in the surface of the paint. This water based paint is manufactured using organic pigments, which give a very natural deep colour. These natural paint batches can vary slightly in tone from one batch to the next. For over-painting any WATER BASED eggshell paint may be used.

All Neptune furniture is designed to last the test of time, and give years of enjoyable use. However in extreme household environments where hairline cracks have appeared on some joints due to very low humidity, it can occasionally be necessary to over-paint after 6 months to ensure a long term perfect finish.

In order to over-paint Neptune offer a furniture painting kit. Available from www.neptune.co.uk

Oak Worksurface re-sealing:

Your oak worksurface is manufactured from solid oak which is likely to move over time in response to the humidity of the environment around it. Some hairline cracks may develop. This is part of the natural character of the material and allows it to improve with age. This will not affect the structure of your furniture in any way.

The oak surface is treated with three coats of water based matt seal. We find that this gives a natural look whilst giving good protection to normal wear and tear. We do however suggest the use of coasters & table mats. We also suggest you promptly clean any spillages.

For care and maintenance of your Furniture we offer a FURNITURE OIL TREATMENT KIT. This kit will give additional stain resistance and should be used where furniture is likely to require extra protection. This kit is available from www.neptune.co.uk

9. Contact Information

If you have any questions regarding the fitting of your kitchen please feel free to contact us on the below.

Neptune Classics

Unit 2, Lydiard Fields

Swindon

Wiltshire

SN5 8UY

t : 01793 881144

f : 01793 881155

e : info@neptune.co.uk

w : www.neptune.co.uk



Lydiard Fields, Great Western Way, Swindon, Wiltshire SN5 8UY

t : +44 (0) 1793 881144 f : +44 (0) 1793 881155 e : info@neptune.co.uk

www.neptune.co.uk

Sept 2008