

# Euroheat Wood Moisture Meter



Wood Energy

## Operating the Instrument.

Removing the protective probe cover automatically turns the instrument to ON.

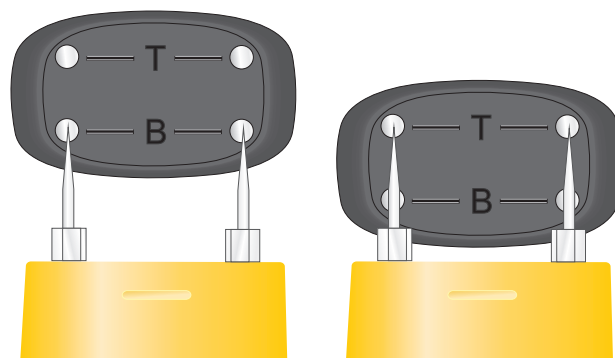
Putting the two probes across the "B" terminals in the cover top will indicate the battery condition. The instrument should display 44% when the batteries are new.

The instrument's calibration can be confirmed by putting the probes across the "T" terminals in the cover top. The instrument should display  $27\% \pm 2\%$ .

Replacing the cover will turn the instrument OFF.

If the cover is left off the instrument will automatically shut down after approximately 15 minutes.

Replacing and removing the cover will turn the instrument ON again.



## Maintenance.

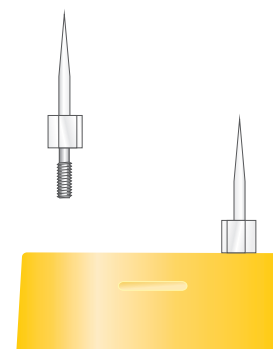
Always keep the instrument dry.

Prevent dirt or moisture bridging the measuring probes.

The measuring probes can be unscrewed and replaced when blunt.

When the batteries fall below their operating voltage a battery symbol will appear in the LCD display. The batteries can be replaced by unscrewing the screw at the back of the instrument above the pocket clip to open the battery housing.

Ensure the batteries are fitted with the correct polarity orientation.



## Technical Data

Measuring principle.	Electrical resistance.
Electrode length.	8mm.
Electrodes.	Integrated, replaceable.
Measuring range.	6--44%.
Display.	$\pm 1\%$ .
Auto power OFF.	15 minutes.
Battery.	3x CR 2032 lithium.
Ambient temperature.	0--40° C.
Ambient relative humidity.	0--85%.
Dimensions.	130x40x25mm.
Weight.	100g.
Warranty.	1 year.

## Accuracy

Differing wood and differing temperatures of wood will give slightly different readings for similar moisture contents. If the wood is for burning these small variations will be insignificant.

Try to bring indoors one or two pieces of wood to dry as a reference with which to compare the progress of your wood stored outdoors.

## Euroheat Distributors (HBS) Limited.

Unit 2, Court Farm Business Park, Bishops Cleeve, Worcestershire WR6 5AY. United Kingdom

Telephone Pre Sales 01885 491112 Facsimile Pre Sales 01885 491106

Email sales@euroheat.co.uk

[www.euroheat.co.uk](http://www.euroheat.co.uk)

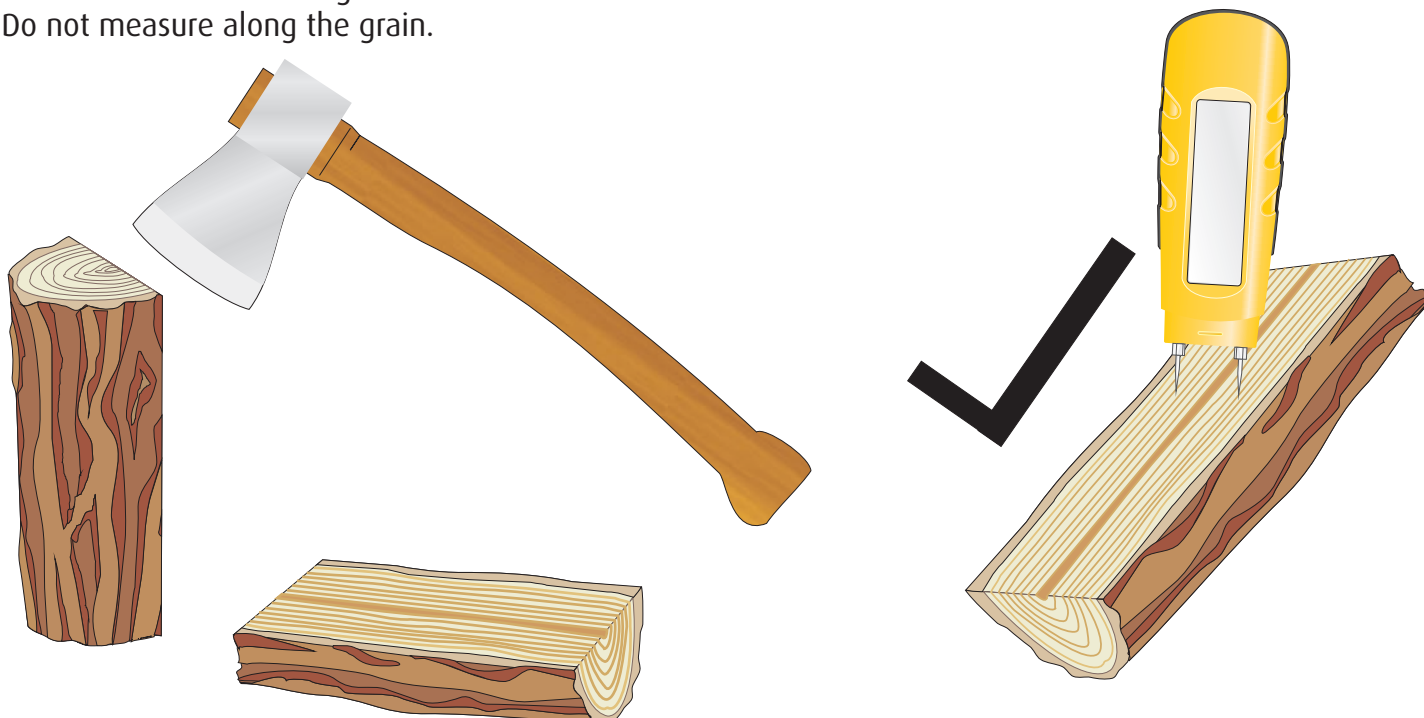
# Measuring Wood Moisture

Pushing the probes into the wood will give an accurate reading if the following rules are followed:-  
Always measure across the grain of the newly exposed face of a freshly split log.

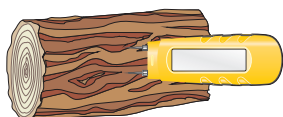
Do not measure through bark.

Do not measure the end grain.

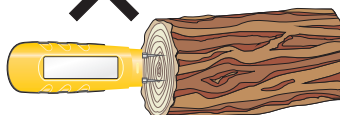
Do not measure along the grain.



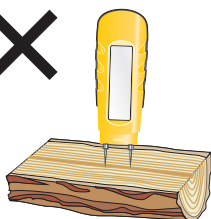
**Do not measure through bark.**



**Do not measure along the grain.**



**Do not measure the end grain.**



## What Moisture Content?

The moisture content of wood for burning should be as low as possible, but certainly below 20%. This is especially important if you are burning wood in a smoke exempt area in an approved appliance because wood with a moisture content above this will not burn cleanly or efficiently.

Wood with moisture content over 20% should not be burnt but stored in a log store until suitable.

To reduce the moisture content of fire wood more quickly, ensure it is split into small sections and stored in a professionally designed log store.



**Log stores available from Euroheat**  
**[www.euroheat.co.uk](http://www.euroheat.co.uk)**